



Scotland Rack, Ltd.

Boltless Steel Edge Shelving

CARRIES MORE LOAD AT LESS COST THAN ANY OTHER SHELVING

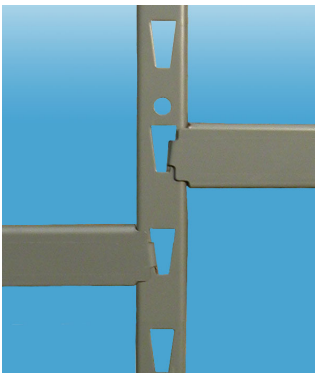


Boltless Steel Edge Shelving

Industry's largest range of in-stock sizes

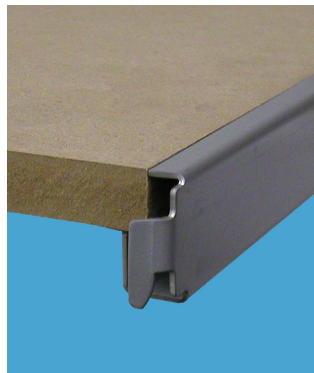
- **9 Standard Heights:**
3, 4, 5, 6, 7, 8, 9, 10, and 12 feet
- **6 Standard depths:**
12, 15, 18, 24, 30, and 36 inches
- **7 Standard duty shelf lengths:**
24, 30, 36, 42, 48, 54, and 60 inches
- **5 Heavy duty shelf lengths:**
36, 42, 48, 54, and 60 inches
- **Standard and heavy duty shelves**
- **Custom sizes also available!**
Call for quote.

Quick Ship of all sizes: 1 - 5 Days



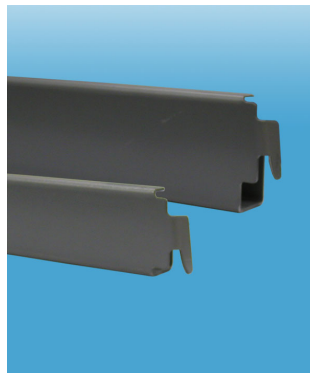
Upright Frames

Boltless, all-steel construction. Shelf bars hook into keystone slots for adjustment on 2" centers. Only 1 frame needed between sections in a row.



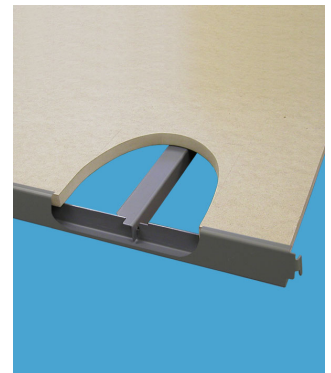
Steel Edge protects MDF

Steel edge design on shelf bars sits flush with and protects the MDF shelf panels. Rounded steel edges for ease of sliding material on and off.



Standard or Heavy Duty Shelf Bars

Standard Duty shelf bars 1-1/4" high or Heavy Duty shelf bars 1- 3/4" high are tough enough to handle a wide range of loads. Shelf bars are interchangeable and can be combined to maximize storage at lowest cost.



Shelf Supports for Heavy Duty Shelf Bars

Shelf supports drop into place on Heavy Duty shelf bars to support the MDF shelf panels and prevent accidental disengagement of shelf bars.

6, 7, & 8 Ft. High Sections with Standard Duty Shelves: Model Numbers

Starting Section includes 2 upright frames and one back brace. Add-On Section includes 1 upright frame.

6 Ft High Sections with 5 Standard Duty Shelves														
Depth	24" Long		30" Long		36" Long		42" Long		48" Long		54" Long		60" Long	
	Starting Section	Add-On Section	Starting Section	Add-On Section	Starting Section	Add-On Section	Starting Section	Add-On Section	Starting Section	Add-On Section	Starting Section	Add-On Section	Starting Section	Add-On Section
12"	6425W	6425K	6025W	6025K	6625W	6625K	6225W	6225K	6825W	6825K	6925W	6925K	6725W	6725K
15"	6455W	6455K	6055W	6055K	6655W	6655K	6255W	6255K	6855W	6855K	6955W	6955K	6755W	6755K
18"	6485W	6485K	6085W	6085K	6685W	6685K	6285W	6285K	6885W	6885K	6985W	6985K		
24"	6445W	6445K	6045W	6045K	6645W	6645K	6245W	6245K	6845W	6845K				

7 Ft High Sections with 5 Standard Duty Shelves														
Depth	24" Long		30" Long		36" Long		42" Long		48" Long		54" Long		60" Long	
	Starting Section	Add-On Section	Starting Section	Add-On Section	Starting Section	Add-On Section	Starting Section	Add-On Section	Starting Section	Add-On Section	Starting Section	Add-On Section	Starting Section	Add-On Section
12"	7425W	7425K	7025W	7025K	7625W	7625K	7225W	7225K	7825W	7825K	7925W	7925K	7725W	7725K
15"	7455W	7455K	7055W	7055K	7655W	7655K	7255W	7255K	7855W	7855K	7955W	7955K	7755W	7755K
18"	7485W	7485K	7085W	7085K	7685W	7685K	7285W	7285K	7885W	7885K	7985W	7985K		
24"	7445W	7445K	7045W	7045K	7645W	7645K	7245W	7245K	7845W	7845K				

8 Ft High Sections with 6 Standard Duty Shelves														
Depth	24" Long		30" Long		36" Long		42" Long		48" Long		54" Long		60" Long	
	Starting Section	Add-On Section	Starting Section	Add-On Section	Starting Section	Add-On Section	Starting Section	Add-On Section	Starting Section	Add-On Section	Starting Section	Add-On Section	Starting Section	Add-On Section
12"	8426W	8426K	8026W	8026K	8626W	8626K	8226W	8226K	8826W	8826K	8926W	8926K	8726W	8726K
15"	8456W	8456K	8056W	8056K	8656W	8656K	8256W	8256K	8856W	8856K	8956W	8956K	8756W	8756K
18"	8486W	8486K	8086W	8086K	8686W	8686K	8286W	8286K	8886W	8886K	8986W	8986K		
24"	8446W	8446K	8046W	8046K	8646W	8646K	8246W	8246K	8846W	8846K				

Extra Shelves and Upright Frames

Shelving sections 8ft. high or less need one back brace per row. Shelving sections 9 ft. or higher need one back brace for each section.

Standard Duty Shelves							
Depth	24" Long	30" Long	36" Long	42" Long	48" Long	54" Long	60" Long
12"	2412	3012	3612	4212	4812	5412	6012
15"	2415	3015	3615	4215	4815	5415	6015
18"	2418	3018	3618	4218	4818	5418	
24"	2424	3024	3624	4224	4824		

Heavy Duty Shelves					
Depth	36" Long	42" Long	48" Long	54" Long	60" Long
15"	3615x	4215x	4815x	5415x	6015x
18"	3618x	4218x	4818x	5418x	6018x
24"	3624x	4224x	4824x	5424x	6024x
30"	3630x	4230x	4830x	5430x	6030x
36"	3636x	4236x	4836x	5436x	6036x

Back Braces							
	24" Long	30" Long	36" Long	42" Long	48" Long	54" Long	60" Long
Part #	624	630	636	642	648	654	660

Upright Frames									
Depth	3 Ft High	4 Ft High	5 Ft High	6 Ft High	7 Ft High	8 Ft High	9 Ft High	10 Ft High	12 Ft High
12"	1203	1204	1205	1206	1207	1208	1209	1210	1212F
15"	1503	1504	1505	1506	1507	1508	1509	1510	1512F
18"	1803	1804	1805	1806	1807	1808	1809	1810	1812F
24"	2403	2404	2405	2406	2407	2408	2409	2410	2412F
30"	3003	3004	3005	3006	3007	3008	3009	3010	3012F
36"	3603	3604	3605	3606	3607	3608	3609	3610	3612F

See Load Ratings on Back Cover.

6, 7, & 8 Ft. High Sections with Heavy Duty Shelves: Model Numbers

Starting Section includes 2 upright frames and one back brace. Add-On Section includes 1 upright frame.

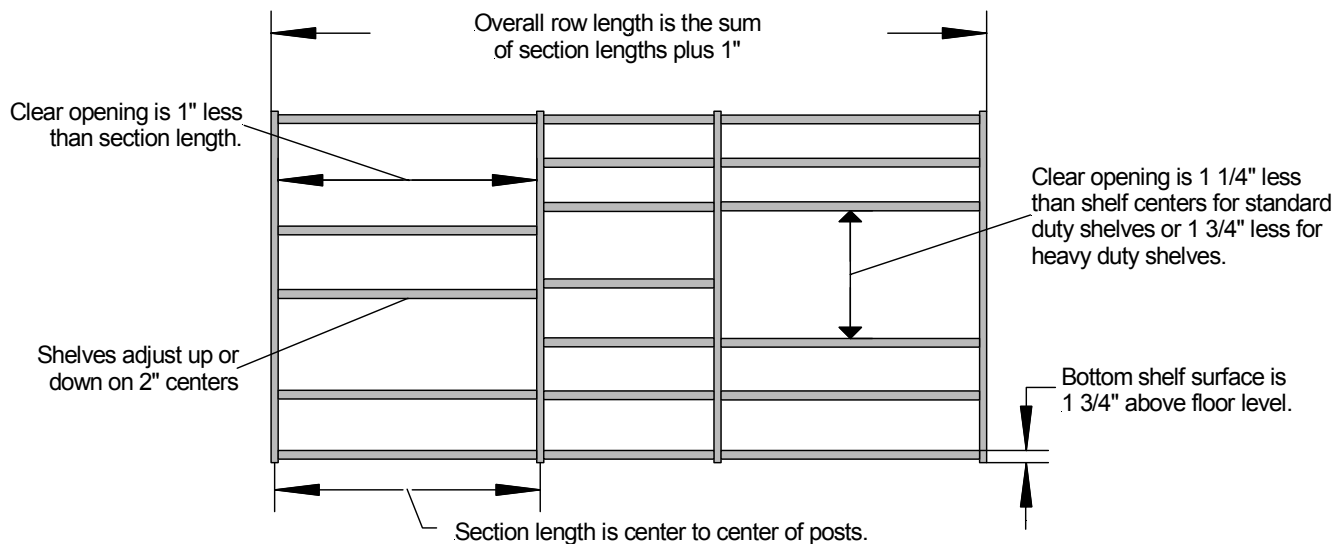
6 Ft High Sections with 5 Heavy Duty Shelves										
Depth	36" Long		42" Long		48" Long		54" Long		60" Long	
	Starting Section	Add-On Section	Starting Section	Add-On Section	Starting Section	Add-On Section	Starting Section	Add-On Section	Starting Section	Add-On Section
15"	6655X	6655Y	6255X	6255Y	6855X	6855Y	6955X	6955Y	6755X	6755Y
18"	6685X	6685Y	6285X	6285Y	6885X	6885Y	6985X	6985Y	6785X	6785Y
24"	6645X	6645Y	6245X	6245Y	6845X	6845Y	6945X	6945Y	6745X	6745Y
30"	6605X	6605Y	6205X	6205Y	6805X	6805Y	6905X	6905Y	6705X	6705Y
36"	6665X	6665Y	6265X	6265Y	6865X	6865Y	6965X	6965Y	6765X	6765Y

7 Ft High Sections with 5 Heavy Duty Shelves										
Depth	36" Long		42" Long		48" Long		54" Long		60" Long	
	Starting Section	Add-On Section	Starting Section	Add-On Section	Starting Section	Add-On Section	Starting Section	Add-On Section	Starting Section	Add-On Section
15"	7655X	7655Y	7255X	7255Y	7855X	7855Y	7955X	7955Y	7755X	7755Y
18"	7685X	7685Y	7285X	7285Y	7885X	7885Y	7985X	7985Y	7785X	7785Y
24"	7645X	7645Y	7245X	7245Y	7845X	7845Y	7945X	7945Y	7745X	7745Y
30"	7605X	7605Y	7205X	7205Y	7805X	7805Y	7905X	7905Y	7705X	7705Y
36"	7665X	7665Y	7265X	7265Y	7865X	7865Y	7965X	7965Y	7765X	7765Y

8 Ft High Sections with 6 Heavy Duty Shelves										
Depth	36" Long		42" Long		48" Long		54" Long		60" Long	
	Starting Section	Add-On Section	Starting Section	Add-On Section	Starting Section	Add-On Section	Starting Section	Add-On Section	Starting Section	Add-On Section
15"	8656X	8656Y	8256X	8256Y	8856X	8856Y	8956X	8956Y	8756X	8756Y
18"	8686X	8686Y	8286X	8286Y	8886X	8886Y	8986X	8986Y	8786X	8786Y
24"	8646X	8646Y	8246X	8246Y	8846X	8846Y	8946X	8946Y	8746X	8746Y
30"	8606X	8606Y	8206X	8206Y	8806X	8806Y	8906X	8906Y	8706X	8706Y
36"	8666X	8666Y	8266X	8266Y	8866X	8866Y	8966X	8966Y	8766X	8766Y

Layout Dimensions

Order end frames and shelves to construct your own custom configurations. Depth is overall depth of frames and shelves. Only one end frame required between sections in a row. Shelving sections 8 ft. high or less need one back brace per row. Shelving sections 9 ft. or higher need one back brace for each section.



Design Features

- Boltless shelving for instant assembly.
- All steel edges are safety rolled for freedom from accidental cuts.
- Appropriate for the office, archive storage, or warehouse.
- Rounded steel shelf edges for ease of sliding material on and off.
- Tough baked gray enamel finish for attractive appearance.
- Heavy duty MDF shelf panels avoid “oil can” effect of all steel shelving.
- Shelves adjust on two inch centers without clips or bolts.

Distributed by:

Load Ratings



Standard Duty Shelf

Medium Density Fiberboard shelf panels supported by steel shelf bars front and rear.

Heavy Duty Shelf

Medium Density Fiberboard shelf panels supported by heavy duty steel shelf bars front and rear plus 2 shelf supports front to back.

Total Pounds per Shelf Evenly Distributed

Depth	Shelf Length						
	24"	30"	36"	42"	48"	54"	60"
Steel Edge Standard Duty Shelving							
12"	610	490	410	350	305	250	230
15"	550	500	415	355	310	250	230
18"	450	505	420	360	315	250	
24"	325	510	430	370	320		
Steel Edge Heavy Duty Shelving							
15"			675	575	500	445	400
18"			675	575	500	445	400
24"			675	575	500	445	400
30"			650	575	500	445	400
36"			540	540	500	445	400

Upright Frames

3500 lb. per frame with shelves on 24" maximum centers.



Scotland Rack, Ltd.
4190 Blanche Road
Bensalem, Pa. 19020

www.scotlandrack.com
email: service@scotlandrack.com